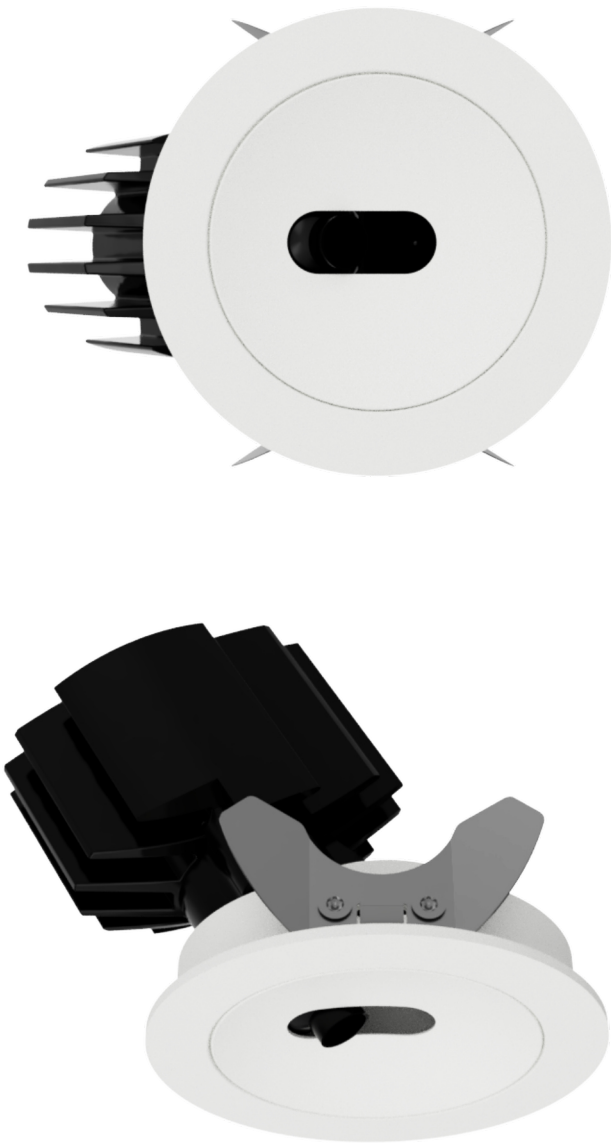
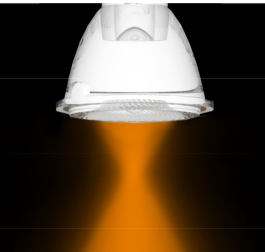


# IRIS Adjustable

Pinhole Light

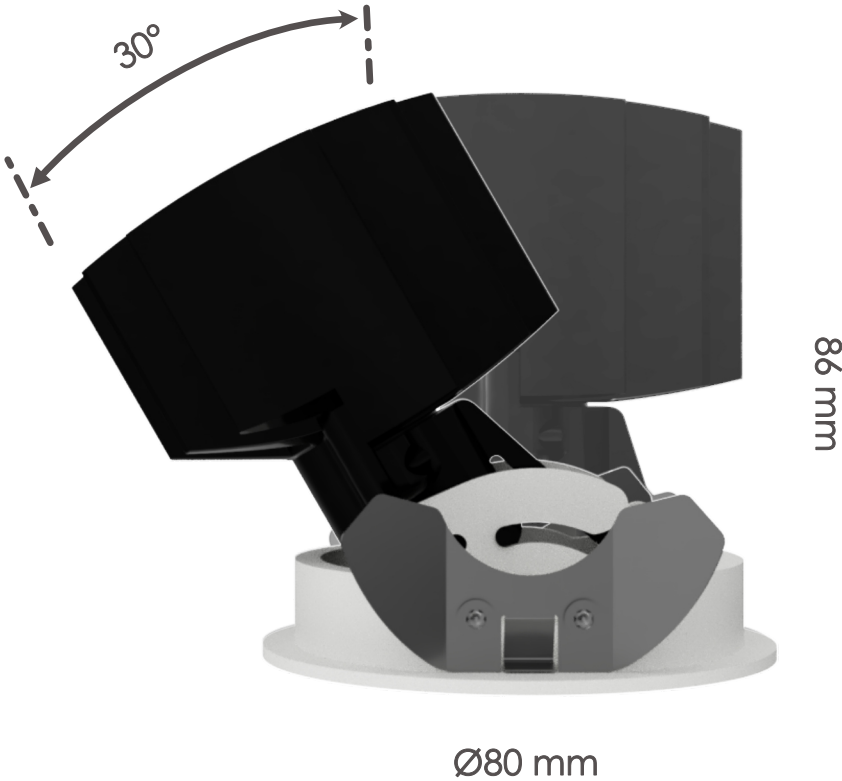
IRIS Range

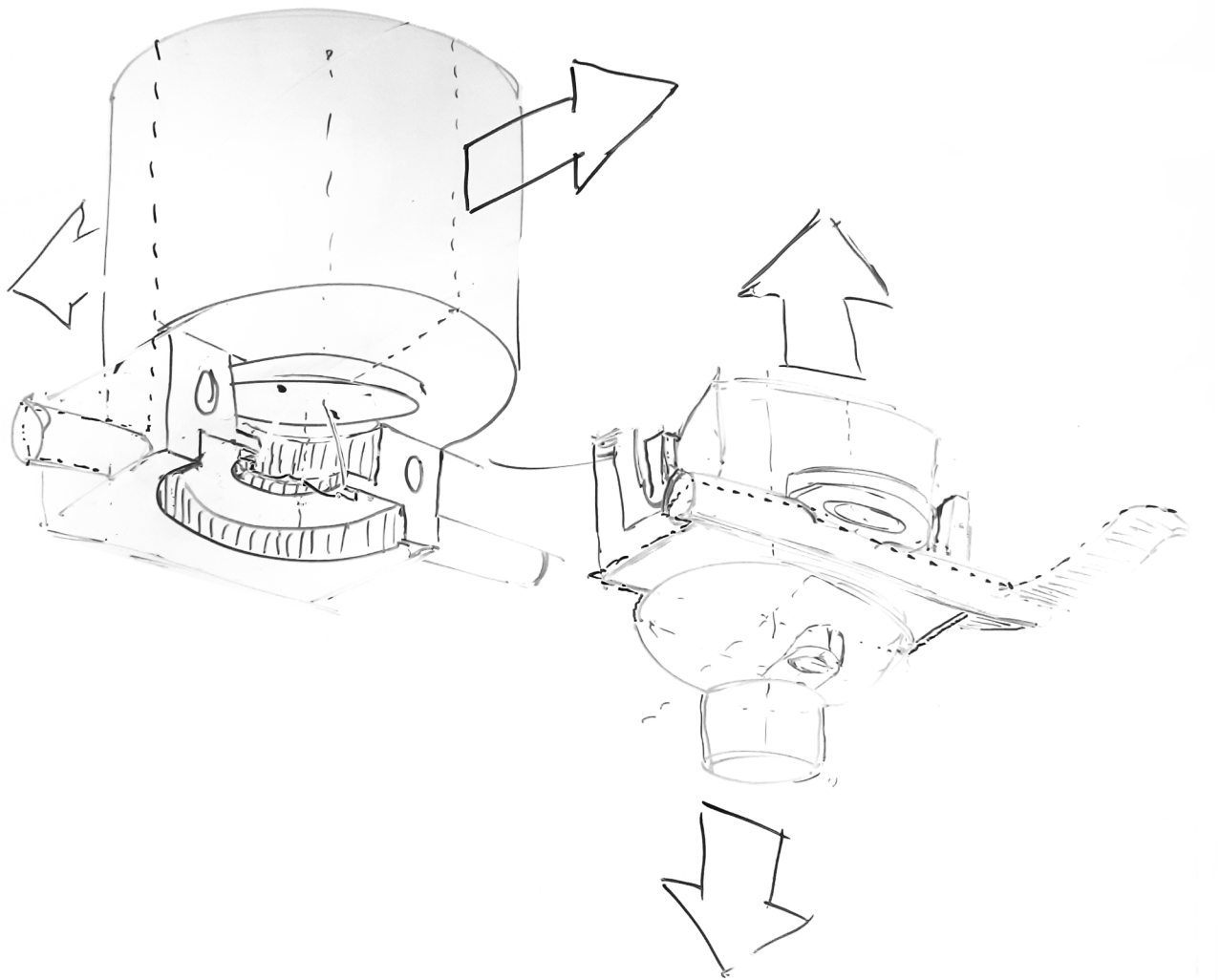
Archlum's IRIS range has a minimalist shape and a light aperture of only 10mm. Deeply embedded in its optical core, IRIS conceals a unique focus lens designed by **Bartenbach** Technology. Optical knowledge and Austrian precision in development and production is the optimal combination for a virtually glare-free solution.



Adjustable Design

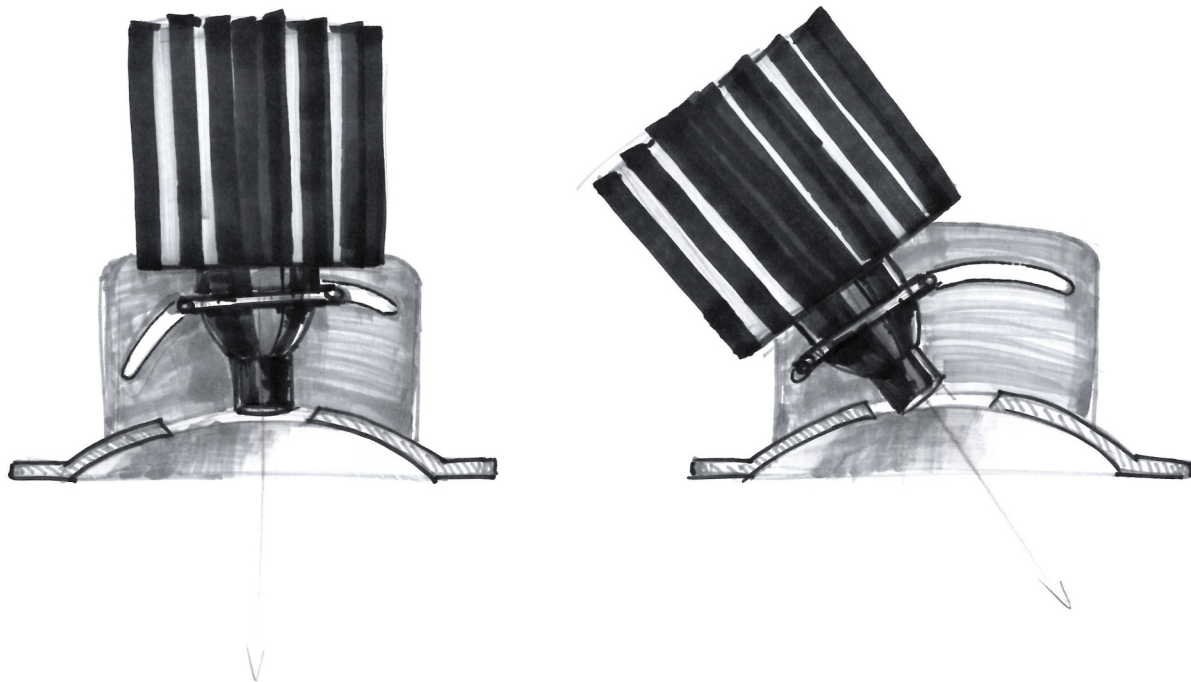
The concealed adjustable spring allows the light source to swivel after the luminaire has been installed, for up to 30° and thanks to the aluminium frame, the light can be rotated up to 355°. The large heat sink is made of die-cast aluminium, providing excellent thermal performance with a maximum product lifespan.



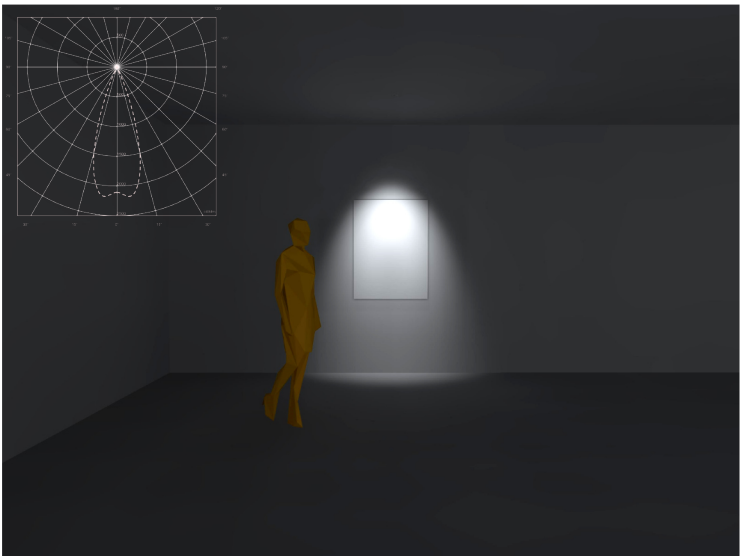


Light Characteristics

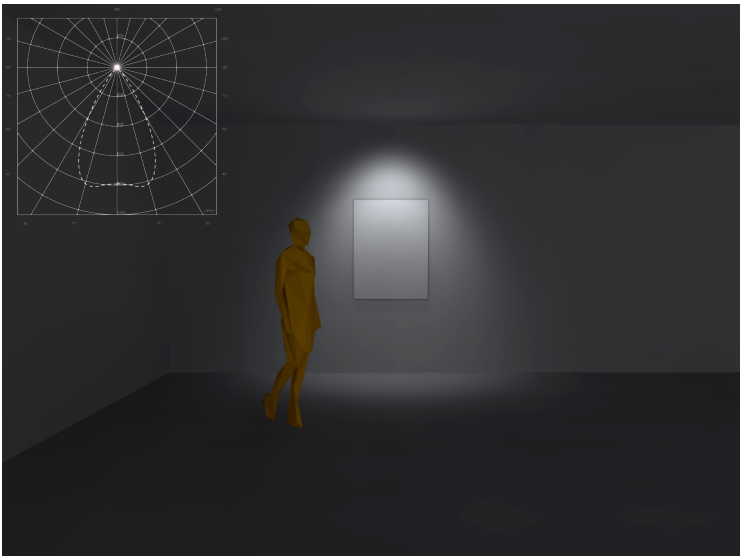
Available in two different beam angles: 35° and 60°, which makes it suitable for highlighting objects and artwork through spotlight distribution, as well as for indirect general lighting.

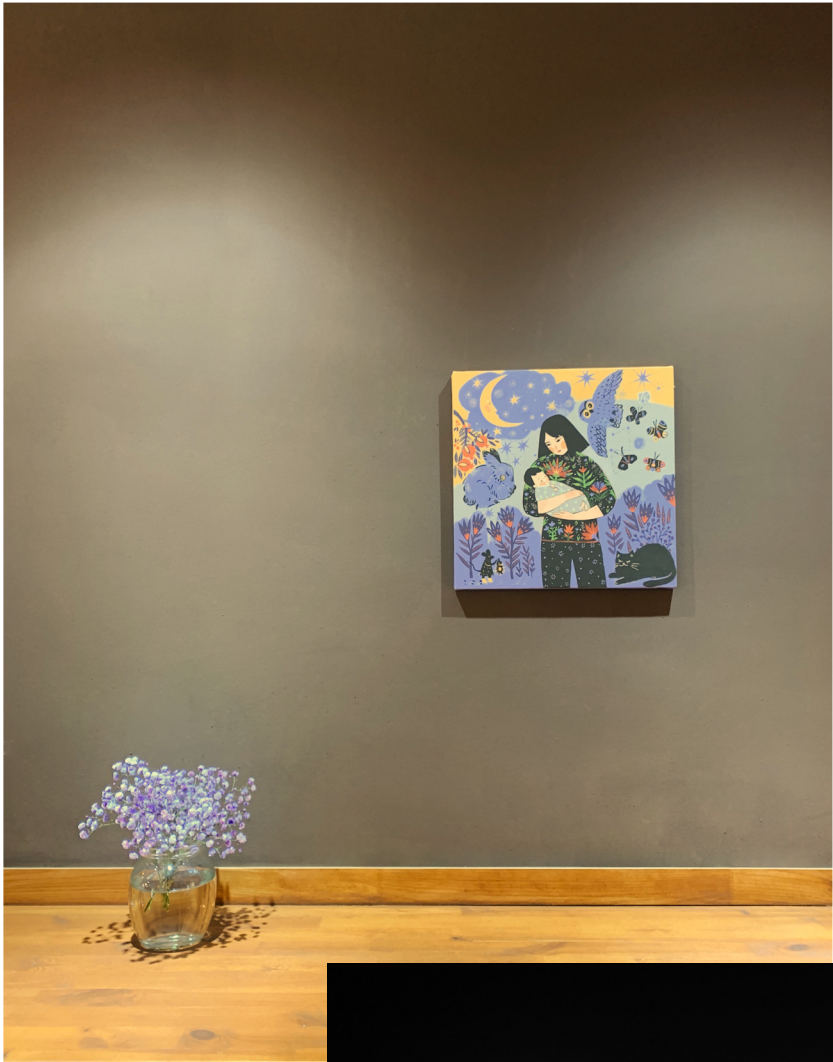


35° beam angle



60° beam angle





IRIS Adjustable, combines state-of-the-art, modern, and minimalist design with architectural integration. Maximum flexibility in the direction of the light.



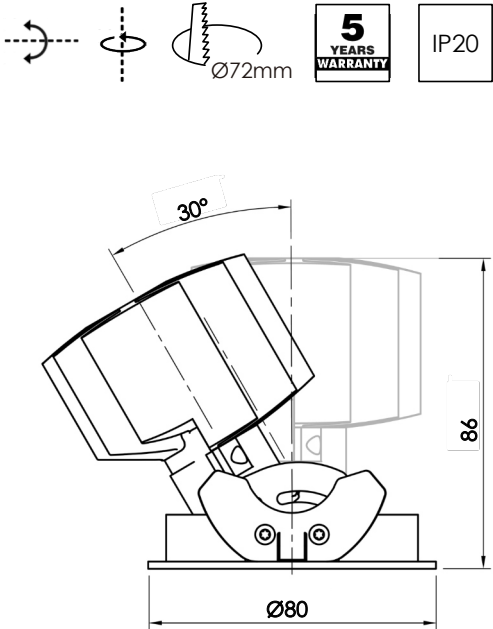
IRIS ADJUSTABLE

Colour Rendering Index

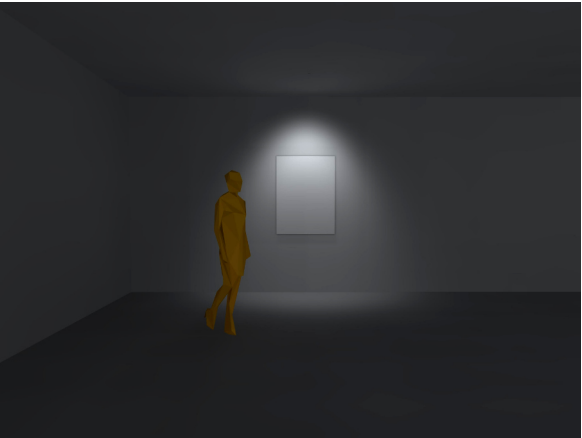
CRI >90

System Power

10 W



35° Beam



60° Beam



Catalogue ID	CCT	Beam	Light output	Power	Dimension
ARCH-IRIS-A-T-35-930-10	3000 K	35°	440 lm	10 W	ø80x86 mm
ARCH-IRIS-A-T-35-940-10	4000 K	35°	440 lm	10 W	ø80x86 mm
ARCH-IRIS-A-T-60-930-10	3000 K	60°	450 lm	10 W	ø80x86 mm
ARCH-IRIS-A-T-60-940-10	4000 K	60°	450 lm	10 W	ø80x86 mm

# archlum

The right light for every space

[www.archlum.com](http://www.archlum.com)